

# Weekly cleaning

## S200 Easy Milc



See also Chapter "Safety notes" and "Cleaning" in the operating instructions.

**CAUTION!**  
User at risk!



There is a risk of scalding in the dispensing area of beverages, hot water and steam. During dispensing or cleaning, never reach under the dispensing positions.

**CAUTION!**  
Risk of machine damage!




Do not use abrasive cleaning products.



A message appears on the display when weekly cleaning is pending.



*Cleaning must be performed within 36 hours after the message first appears. Otherwise mandatory cleaning takes effect and the machine is blocked.*

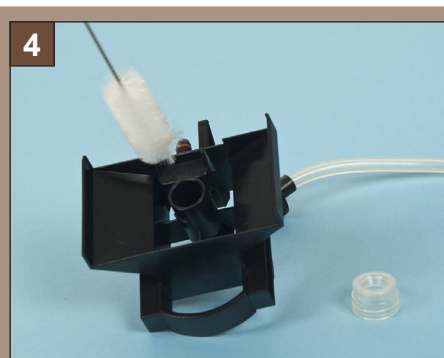
- ▶ Press the [  ] button and hold ( $\pm 4$  s).
  - ☒ "Cleaning program - remove milk pack" appears on the display.
- ▶ Press the lever on the back of the beverage outlet (see Fig. B).
  - ☒ The foamer head detaches from the holder.



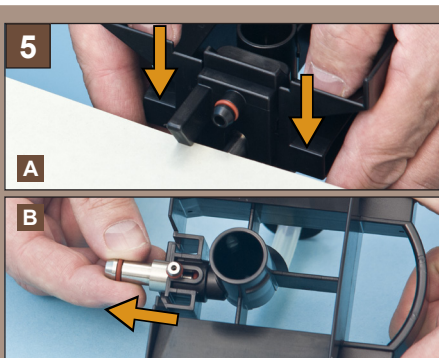
- ▶ Open the door of the cooling unit upwards and let it engage.
- ▶ Remove the milk pack.
  - ☒ "remove & clean mixer" appears on the display.



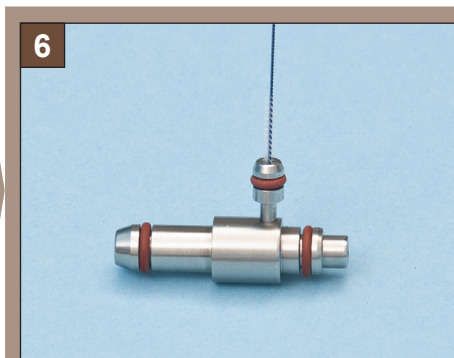
- ▶ Open the left door.
- ▶ Pull the water jet mixer out toward the front.
- ▶ Take the hose out of the hose guide.
- ▶ Remove the water jet mixer and foamer head in one piece.



- ▶ Remove the seal from the water jet mixer and clean it under running water.
- ▶ Clean the water jet mixer with a brush.



- ▶ Detach the plastic mount fixture from the water jet mixer by resting the 'nose' of the fixture on the table and pressing the body of the water jet mixer downwards (see Fig. A).
- ▶ Pull out the metal injector (see Fig. B).



- ▶ Clean the metal injector with a brush.

7



- ▶ Only use "Suma CoffeeClean" cleaning products for cleaning.
- ▶ Mix the cleaning product and warm water in a large container.



The following information can be found on the label of the cleaning product bottle:

- Mixing ratio of the cleaning product to water
- Container size
- Cleaning duration

8

A

B



- ▶ Detach the foamer head from the other parts and rinse under running water.
- ▶ Leave the remaining parts mounted (see Fig. A).
- ▶ Submerge all parts together in the bath of warm water and cleaning product (see Fig. B).
- ▶ Rinse the parts under running water after removing them from the cleaning bath.
  - ☒ "clean cool box- replace mixer" appears on the display.

9



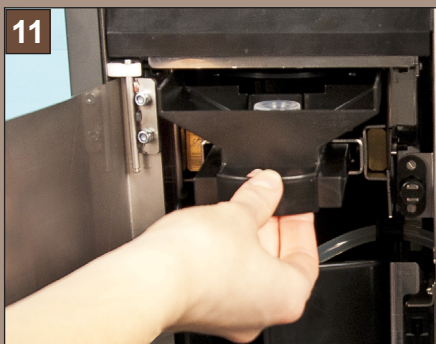
- ▶ Clean the opening in the bottom of the cooling unit with a brush (see Fig.).
- ▶ Wipe out the inside of the cooling unit with a moist cloth.

10



- ▶ Reinstall all parts in reverse order. Note the following:
  - When routing the hose, ensure that the house opening is in the right position (see Fig.).
  - The foamer head must engage audibly when mounted on the beverage outlet.

11



- ▶ Push the water jet mixer back into the holder.
  - ☒ "replace milk pack" appears on the display.
- ▶ Insert the milk pack.
  - ☒ "empty gr. container" appears on the display.

12



- ▶ Empty the grounds container, clean it and reinstall it.
  - ☒ "Cleaning program - insert tablet" appears on the display.
- ▶ Open the manual inlet and drop in cleaning tablet.
- ▶ Close the manual inlet.
  - ☒ The coffee system cleaning starts and the duration is shown on the display.



Old bean grease in the bean hopper can have a negative impact on the coffee quality. Therefore the bean hopper should also be cleaned weekly.

- ▶ Slide the locking mechanism on the bean hopper upward (see Fig.).
- ▶ Lift off the bean hopper and empty it.
- ▶ Wipe the inside of the bean hopper with a moist cloth. Dry with a clean cloth.
- ▶ Mount the hopper again and open the locking mechanism.

**Never clean the bean hopper in the dishwasher!**

