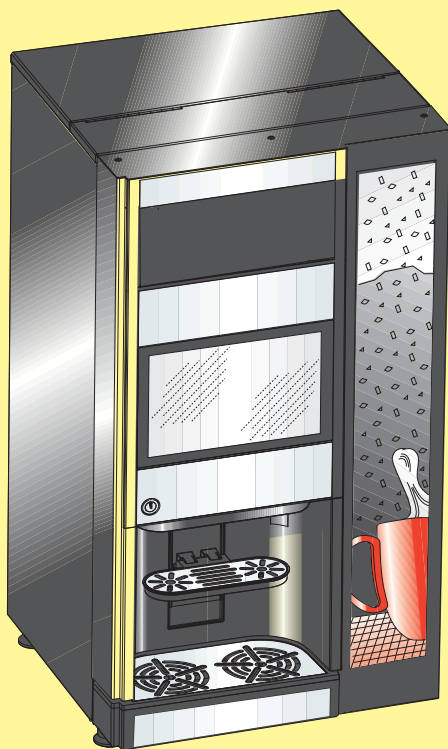


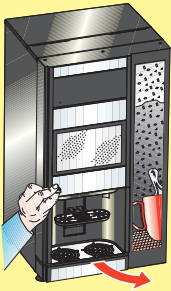
Quick Reference Guide IN 9100



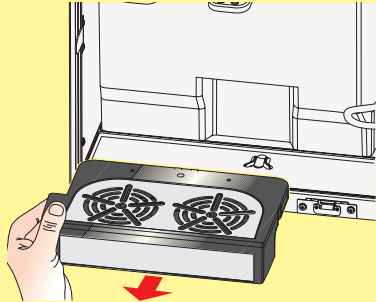
WITTENBORG

U0522EN00

Regular and Deep Cleanings



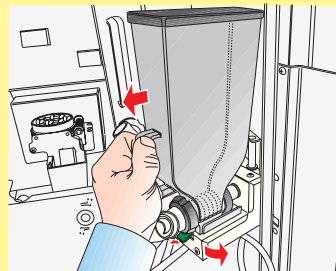
Open the door



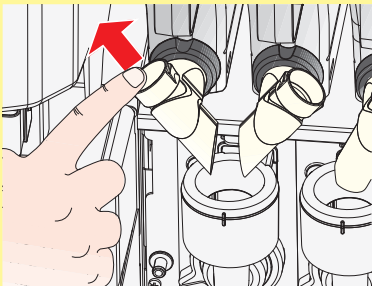
Remove lower drip tray and the upper plate, clean the parts with a sprayed wipe.



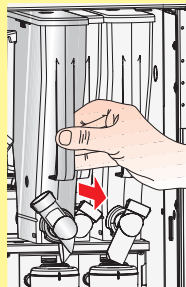
Reset drip tray counter. Tap “Empty solid waste”



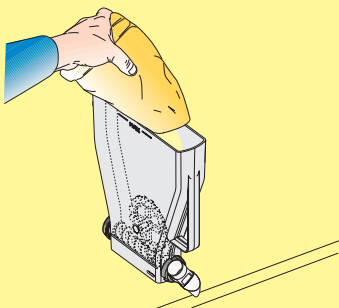
Remove sugar canister(optional): turn it up pull it outward then press the green lever below. Put it on a table



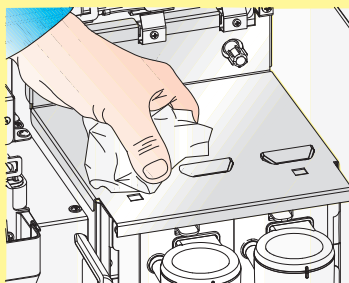
Pull up instant canister outlets.



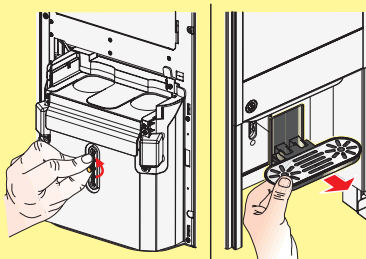
Pull up product outlet then remove instant canister (one at a time).



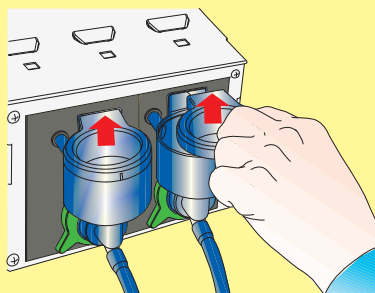
Put canisters on a table, open lids then fill them with products. Clean outside canisters before place them back into machine.



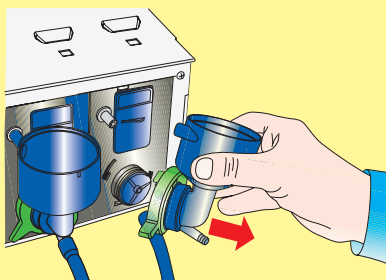
Clean instant canister table.



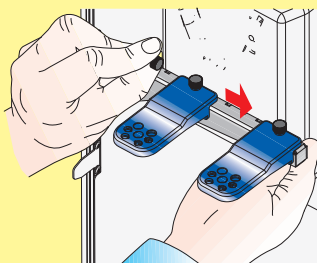
Unscrew the knurl that fix external drip tray, clean external drip tray with a wet wipe. Place it back



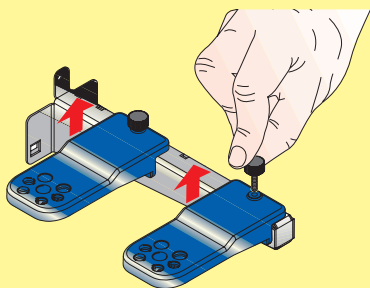
Remove head of mixing bowls, spray into them, clean with wipe and replace the head of mixing bowls.



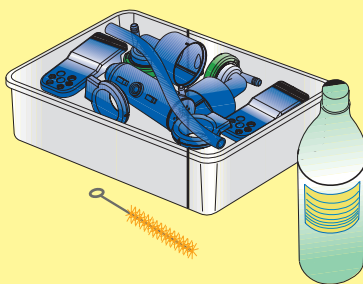
Remove mixing bowls and pipes, exhaust system area and mixer plates. Remove water nozzle



Unscrew the knurl and remove the frontal bar.



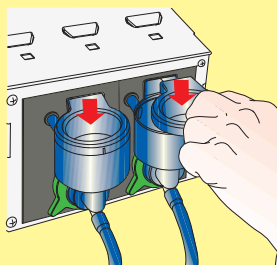
Unscrew the knurls that fix nozzle supports to frontal bar.



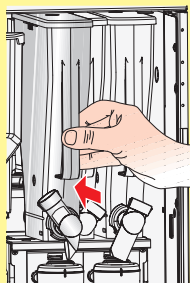
Wash parts using cleaning materials, finally wash with clean water.



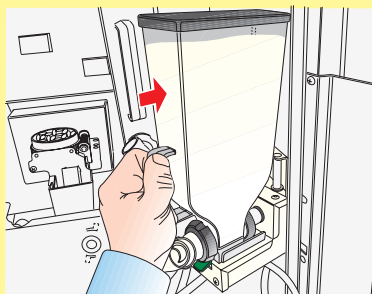
Dry the drip tray for nozzles, head of mixers, exhaust system parts.



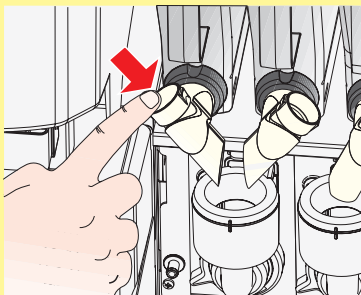
Reassemble dried parts. Be careful with proper positioning of hoses.



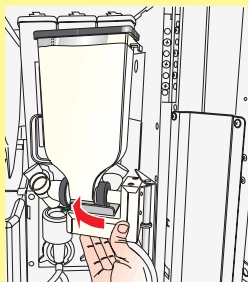
Place back instant canisters, be careful to put them into guidelines.



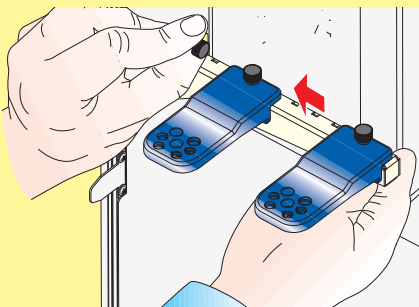
Place back sugar canister, be careful to hear green lever click. (optional)



Push down instant canister outlets.



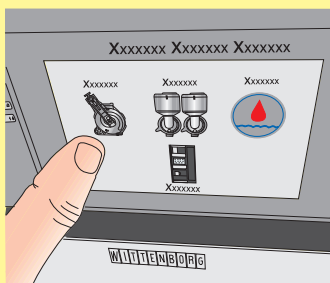
Close sugar shelf (if present).



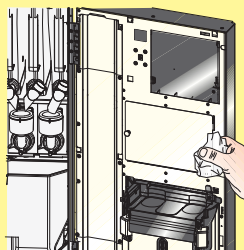
Place back nozzle supports and fix the bar to machine, Place back creamer to nozzle support with proper hoses.



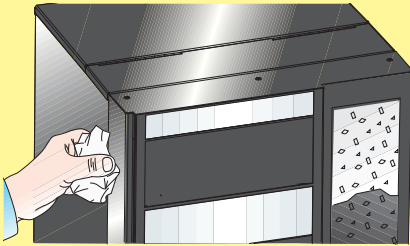
For rinsing: close the door (or simulate door closing by placing the yellow key into its slot) select "Wittenborg" then "Maintenance" and "Daily operations".



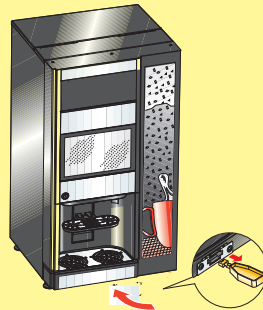
Chose the icon to start rinsing cycle then press OK.



Clean internal and external side of the door with wet wipe.



Clean the whole cabinet with wet wipe.



Fill in the HACCP documentation book. Remove the yellow key, close the door and start up.

HACCP Guidelines (continued)

Replacement

- Depending on the hardness of water, the brewer filter with gasket must be replaced after approx. 25,000 drinks, even if apparently still efficient.

Filing

- After opening, write the date of opening on the package.
- File the “best before”-date of the package used to fill the machine.
- File service and maintenance reports.

Training

- Train staff on HACCP guidelines.
- Implement the activities in the work schedules.
- For further questions please contact your service representative.

Cleaning Record Card